



## Fully Automate Application Deployments with F5 and Puppet Labs

### F5 and Puppet Labs offerings

- Puppet Enterprise Module for F5® BIG-IP® Local Traffic Manager™ (LTM)
- Puppet Open Source Module for BIG-IP LTM

Operations teams are expected to manage increasingly complex, heterogeneous environments while meeting enterprise-class service levels for application delivery. DevOps best practices enable applications to scale rapidly and efficiently without costly manual interventions. Extending this functionality to the Application Delivery Controllers (ADCs) is a critical facet of any full-featured DevOps software package. F5 and Puppet Labs provide the necessary functionality for operations teams to deploy, automate, and manage the configuration of an entire application infrastructure “stack.” This enables application developers the ability to elastically expand and contract infrastructure resources, automate application tests, and reduce application development time frames.

### Complete Application Automation

With its declarative, model-based approach to IT automation, the Puppet Enterprise solution from Puppet Labs enables you to perform functions as diverse as automating simple, repetitive tasks to deploying large-scale public, private, and hybrid clouds. It also provides a unified, software-defined approach for automating the management of compute, network, and storage resources. Puppet Enterprise aids organizations in delivering applications in a more seamless, automated manner.

### Elastic Operations and Infrastructure

Virtualization of servers, storage, and now networking is a key precondition for the fully automated enterprise. Puppet Enterprise builds on the flexibility of a virtualized infrastructure by enabling modeling, automated push-button deployments, and configuration management. The ability to model, test, and then deploy configuration changes in private, public, and hybrid clouds ensures an efficient use of your infrastructure resources and allows organizations the ability to most effectively use these resources.

## Learn more

For more information about F5:  
[f5.com](http://f5.com)

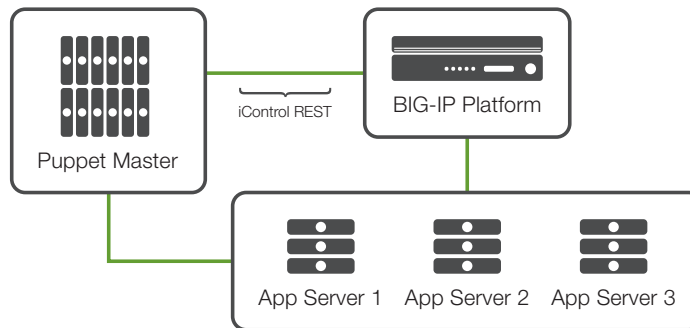
BIG-IP LTM:  
[f5.com/products/modules/local-traffic-manager](http://f5.com/products/modules/local-traffic-manager)

Puppet Labs:  
[puppetlabs.com](http://puppetlabs.com)

Including F5® BIG-IP® Local Traffic Manager™ (LTM) in the overall modeling is essential for proper testing and configuration of application deployments. With the F5 and Puppet Labs solution—Puppet Enterprise Module for BIG-IP LTM—customers can now automate and test their application deployments before moving to production, ensuring proper application sizing and performance.

## Streamline Migration to the Cloud

Migrating an application to the cloud is a complex process that requires enterprises to consider application performance, security, infrastructure cost, and management complexity. Utilizing the Puppet Enterprise Module for BIG-IP LTM, consistent application configuration and deployment can be ensured whether those applications are deployed on premise or in public cloud infrastructures.



The Puppet Labs Puppet Master provides management and automation for the BIG-IP® platform via F5 iControl® REST interface.

Puppet Labs provides configuration management for application servers via preinstalled agents on the servers. This allows system administrators the ability to provision and manage an entire stack.

## The Puppet Enterprise Module for BIG-IP LTM:

- Is configured through iControl REST
- Extends application automation to layers 4–7
- Is the first fully supported ADC module

To learn more about how F5 can help your business, visit [f5.com/products/modules/local-traffic-manager](http://f5.com/products/modules/local-traffic-manager).

F5 Networks, Inc. 401 Elliott Avenue West, Seattle, WA 98119 888-882-4447 [www.f5.com](http://www.f5.com)

Americas  
[info@f5.com](mailto:info@f5.com)

Asia-Pacific  
[apacinfo@f5.com](mailto:apacinfo@f5.com)

Europe/Middle-East/Africa  
[emeainfo@f5.com](mailto:emeainfo@f5.com)

Japan  
[f5j-info@f5.com](mailto:f5j-info@f5.com)

Solutions for  
 an application world.

