



F5, VMware, and EMC offerings

- BIG-IP® Local Traffic Manager™
- BIG-IP® Global Traffic Manager™
- BIG-IP® WAN Optimization Manager™
- VMware vSphere 5
- VMware Metro vMotion
- VMware Storage vMotion
- EMC VPLEX Metro

Improved Mobility for Live Migration Events Across Metro Distances

The feasibility and reliability of migrating live virtual applications over long distances has been demonstrated by F5. However, a primary obstacle to broader adoption has been the challenges associated with moving large quantities of virtualized storage. Combining F5, VMware, and EMC solutions eliminates the requirement of migrating storage. Therefore, live migrations of virtual applications can now be performed for environments with large amounts of storage, where they had not been possible before.

Eliminating Storage Constrains

VMware vMotion enables users to move live virtual machines (VMs) from one server to another, including the possibility of moving VMs between local, metro, and remote data centers. This can serve a wide range of use cases, from simple one-time application migrations to capacity expansion or even disaster avoidance.

vMotion performance is sensitive to network latency and bandwidth, which historically prevented vMotion events over longer distances. Furthermore, the requirement of moving associated data using Storage vMotion added the challenge of moving large quantities of data across the WAN.

Combining F5, VMware, and EMC solutions eliminates the need to move storage data across the WAN, which results in reliable, secure, and faster live migrations over metro distances.

Learn more

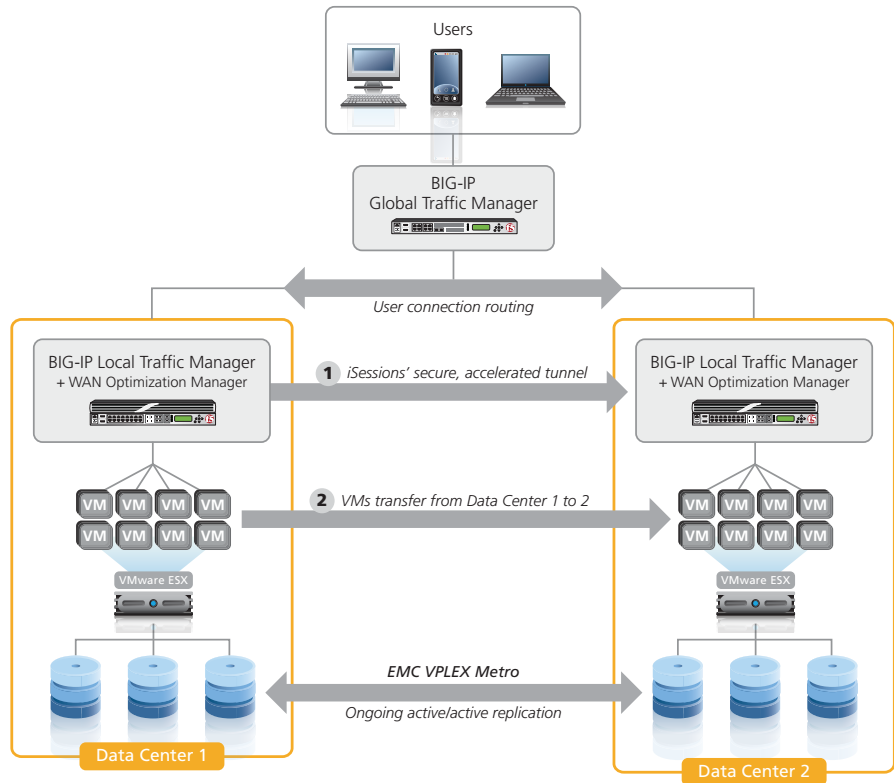
For more information about F5, VMware, and EMC VPLEX, use the search function on f5.com to find these resources.

Deployment guide

Deploying BIG-IP v10.2 to Enable Long Distance Live Migration with VMware vSphere Motion

DevCentral blog

Introducing Long Distance vMotion with VMware



Architecture supporting live migration with F5, VMware, and EMC VPLEX Metro.

Faster Migrations, Longer Distances

VMware Metro vMotion and EMC VPLEX Metro enable live-state applications to be fully migrated to a remote data center without an elongated Storage vMotion. Metro vMotion decreases the sensitivity to network latency, supporting longer distances.

Also, EMC VPLEX Metro replicates virtualized storage across data centers, so the identical data is available in both data centers, thus eliminating the need for moving the data.

F5 BIG-IP Local Traffic Manager (LTM) and BIG-IP Global Traffic Manager (GTM) together with BIG-IP WAN Optimization Manager (WOM) help optimize, secure, and redirect user requests so that production is unaffected during the migration process.

To find out how F5, VMware, and EMC joint solutions can help your business, contact VMwarePartnership@f5.com or visit the [VMware solutions page](#).