



# F5 BEACON

## KEY BENEFITS:

- **Achieve full visibility, transparency, and monitoring of your application landscape**

Beacon enables simple, customizable, application portfolio visibility, complete transparency, and health and performance monitoring.

- **Get simple, powerful, easy-to-consume insights**

Operational, cost, and security insights provide intelligence for a specific line of business or practice. In addition, you can create your own custom insights for broader visibility.

- **Make fast and impactful decisions based on app dashboards and analytics**

View your app dashboards and analytics to make fast, impactful, and better-informed decisions.

- **Integrate across your ecosystem for actionable intelligence on your business capabilities**

Monitor your app landscape for improved intelligence, capabilities, and customer experience. Obtain visibility through API-level integrations for fast resolution of anomalies.

## VISIBILITY AND INSIGHTS ACROSS YOUR ENTIRE APP LANDSCAPE

The application landscape is growing exponentially as organizations are increasing their app velocity and decreasing time-to-market to meet market demands. An IDC report saw 700 million apps in 2018 and forecasts 3.7 billion apps in 2023, a 40% CAGR growth rate.

In addition, many companies are in various stages of a digital transformation process that incorporates strategies for developing and deploying apps across multi-cloud and hybrid-cloud environments. According to the [2019 State of Application Services report](#), 69% of companies are executing digital transformation with a drive to increase automation and orchestration initiatives and move to containers and microservices for flexibility and portability.

With more and more apps in multiple environments, most organizations are unable to visualize the complete layout of their applications to know the status and understand the security and compliance or the health of their apps. There is also a lack of integration across vendor solutions that leads to the inability to leverage app data for meaningful insights.

App owners, IT leaders, and executives need a single solution for application visibility and analytics.

F5 Beacon empowers you to achieve full visibility across your application landscape, obtain app insights and business intelligence, and make fast, impactful, and better-informed decisions. With the Beacon Insight Engine, you can leverage pre-built insights or create your own custom insights. Beacon also integrates with many types of deployment across hybrid and multi-cloud environments—and provides a rich set of app stats in a simple, easy-to-consume SaaS model.

FEATURES:

- Application discovery and modeling
- Insights (pre-built and custom)
- Application health and performance monitoring
- Interactive and customizable dashboards
- API first—extensible open APIs
- Broad set of integrations for F5 product and services and 3rd-party ecosystems.
- SaaS delivery model

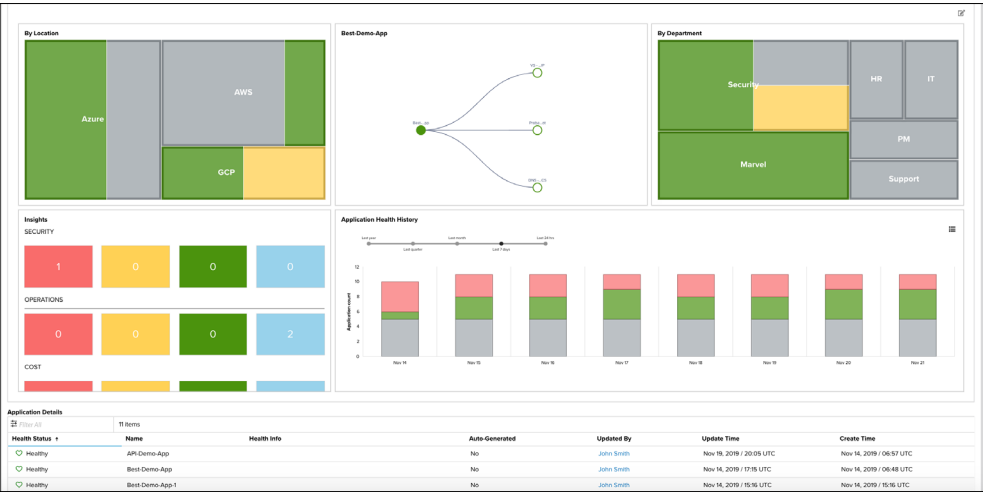
**Figure 1:** F5 Beacon, allows for multiple dashboard views of applications by location, by department, and by cost center. In addition, you can view app health history, timelines, uptime, events, and more details—empowering you to make fast, impactful, and better-informed decisions.

APPS PROLIFERATE TO KEEP UP WITH CUSTOMER DEMAND

Developers and systems teams are evolving and automating their continuous integration and continuous delivery (CI/CD) pipelines in order to accelerate app deployments and achieve a faster time to market. With app proliferation driven by customer demands, organizations need deeper visibility into the apps they have and the health, performance, and cost of those applications. According to F5 research, 0% of customers can currently report with confidence the number of applications in their portfolio. With an ever-growing number of apps in the enterprise—and a lack of visibility to view them—a comprehensive solution in a single pane of glass is required for app visibility, monitoring, and analytics.

A SINGLE VIEW OF YOUR APPLICATION LANDSCAPE

With a simple onboarding process, Beacon is a fast, easy-to-use solution with a highly visible app inventory. It provides customizable dashboards with app portfolio visibility, event and notification transparency, and health and performance monitoring and analytics. Beacon leverages application data imported into a single-pane-of-glass service solving cross-platform dependencies and using app inventory dashboards for easy viewing of app stats. The solution enables rapid time to value with multi-cloud connectivity delivered as a SaaS offering. App owners, line of business, and operations managers—along with executives—now have a broad monitoring view of their application landscape in all integrated environments.



## THE INSIGHTS YOU NEED TO MAKE BUSINESS DECISIONS MORE QUICKLY

In addition to app visibility and analytics, Beacon is an open, extensible platform delivering powerful app insights. Pre-built app insights provide intelligence on a specific line of business or practice. Beacon includes easy-to-consume security, operational, and cost insights. You can also create your own customized insights based on unique data sets and requirements to empower decision making and reduce time to execution and resolution.

Here are some common questions you can find answers for with Beacon insights:

### Security Insights:

- Which applications are encrypted?
- How many applications are actively blocking threats?
- Which apps are protected by a WAF?

### Operational Insights:

- Which apps are at risk of service disruption?
- What percent of time was my app available?
- What was the average response time for my apps?
- Why is my app down?

### Cost insights:

- How many apps are deployed elastically?
- Where are my idle and underutilized resources?
- Which environments are using what percent of my budget?

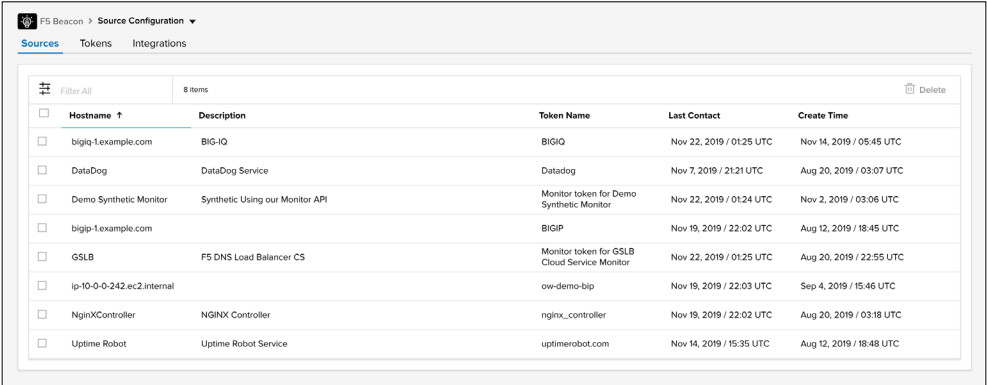
## CUSTOMIZABLE APP DASHBOARDS AND ANALYTICS TO POWER BUSINESS DECISIONS

As application deployments become more complex, troubleshooting and root cause analysis becomes more difficult. With Beacon dashboards loaded with your app data, it's simple to see your app landscape clearly, and understand app anomalies and outages—to drive programs to improve customer experience.

## ECOSYSTEM INTEGRATIONS FOR ACTIONABLE INTELLIGENCE

You can easily view the API-level integrations and source configurations to data stores used to export the app stats to Beacon for actionable intelligence. You'll understand the last engagement with an integration token and if the data store needs a more frequent data stream export. You can use an extensible and robust declarative API that integrates into many F5 and 3rd-party solutions and can be implemented across CI/CD pipelines. Beacon ensures speed to meet SLAs, and governance requirements across your application landscape.

**Figure 2:** F5 Beacon displays source configurations of the hostnames and token names for listing integration data stores, and the initial and latest database interactions.



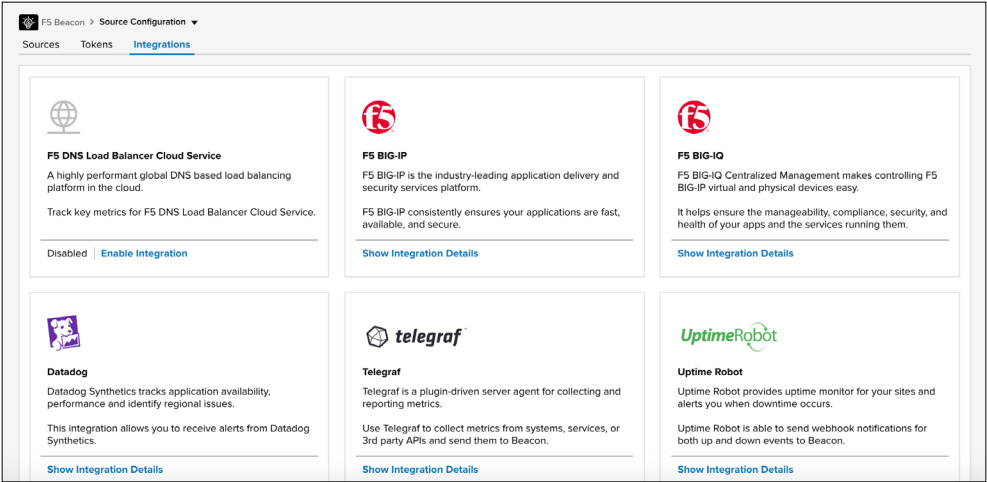
The screenshot shows the 'Source Configuration' page in F5 Beacon. It has tabs for 'Sources', 'Tokens', and 'Integrations'. The 'Integrations' tab is active, displaying a table with 8 items. The table columns are: Hostname, Description, Token Name, Last Contact, and Create Time. The integrations listed are: bigip-1.example.com (BIG-IP), DataDog (DataDog Service), Demo Synthetic Monitor (Synthetic Using our Monitor API), bigip-1.example.com (BIG-IP), GSLB (F5 DNS Load Balancer CS), ip-10-0-0-242.ec2.internal (ow-demo-bip), NginxController (NGINX Controller), and Uptime Robot (Uptime Robot Service).

Hostname	Description	Token Name	Last Contact	Create Time
bigip-1.example.com	BIG-IP	BIGIP	Nov 22, 2019 / 01:25 UTC	Nov 14, 2019 / 05:45 UTC
DataDog	DataDog Service	Datadog	Nov 7, 2019 / 21:21 UTC	Aug 20, 2019 / 03:07 UTC
Demo Synthetic Monitor	Synthetic Using our Monitor API	Monitor token for Demo Synthetic Monitor	Nov 22, 2019 / 01:24 UTC	Nov 2, 2019 / 03:06 UTC
bigip-1.example.com		BIGIP	Nov 19, 2019 / 22:02 UTC	Aug 12, 2019 / 18:45 UTC
GSLB	F5 DNS Load Balancer CS	Monitor token for GSLB Cloud Service Monitor	Nov 22, 2019 / 01:25 UTC	Aug 20, 2019 / 22:55 UTC
ip-10-0-0-242.ec2.internal		ow-demo-bip	Nov 19, 2019 / 22:03 UTC	Sep 4, 2019 / 15:46 UTC
NginxController	NGINX Controller	nginx_controller	Nov 19, 2019 / 22:02 UTC	Aug 20, 2019 / 03:18 UTC
Uptime Robot	Uptime Robot Service	uptimerobot.com	Nov 14, 2019 / 15:35 UTC	Aug 12, 2019 / 18:48 UTC

## INTEGRATIONS

- F5 BIG-IP
- F5 DNS Load Balancer Cloud Service
- F5 BIG-IQ
- F5 NGINX Controller (preview)
- Ansible
- Uptimerobot.com
- Datadog
- Telegraf

**Figure 3:** F5 Beacon integrates with a wide set of products and services.



The screenshot shows the 'Integrations' tab in F5 Beacon. It displays a grid of integration cards for various services. Each card includes the service name, a brief description, and a 'Show Integration Details' link. The services shown are: F5 DNS Load Balancer Cloud Service, F5 BIG-IP, F5 BIG-IQ, Datadog, Telegraf, and Uptime Robot.

**F5 DNS Load Balancer Cloud Service**

A highly performant global DNS based load balancing platform in the cloud.

Track key metrics for F5 DNS Load Balancer Cloud Service.

Disabled | [Enable Integration](#)

**F5 BIG-IP**

F5 BIG-IP is the industry-leading application delivery and security services platform.

F5 BIG-IP consistently ensures your applications are fast, available, and secure.

[Show Integration Details](#)

**F5 BIG-IQ**

F5 BIG-IQ Centralized Management makes controlling F5 BIG-IP virtual and physical devices easy.

It helps ensure the manageability, compliance, security, and health of your apps and the services running them.

[Show Integration Details](#)

**Datadog**

Datadog Synthetics tracks application availability, performance and identify regional issues.

This integration allows you to receive alerts from Datadog Synthetics.

[Show Integration Details](#)

**Telegraf**

Telegraf is a plugin-driven server agent for collecting and reporting metrics.

Use Telegraf to collect metrics from systems, services, or 3rd party APIs and send them to Beacon.

[Show Integration Details](#)

**Uptime Robot**

Uptime Robot provides uptime monitor for your sites and alerts you when downtime occurs.

Uptime Robot is able to send webhook notifications for both up and down events to Beacon.

[Show Integration Details](#)

## MORE INFORMATION

Beacon is available on the [AWS Marketplace](#), [directly via F5](#), and through [F5 Sales](#). A free tier lets you try it out for yourself.

Want to learn more about Beacon? See the following resources.

### Product page

[f5.com/products/beacon-visibility-and-analytics](https://f5.com/products/beacon-visibility-and-analytics)

### Technical documentation

[clouddocs.f5.com](https://clouddocs.f5.com)

### Blogs

[You Can't Protect What You Can't Find](#)

[Delivering End-to-End Application Visibility](#)

[Application Services Update: in Search of Visibility](#)

[Lost and Found: App Proliferation Leads to Lack of Insight](#)

[F5 Beacon Brings Insights through Visibility into Multi-Cloud App Portfolios](#)

## F5 GLOBAL SERVICES

F5 Global Services offers world-class support, training, and consulting to help you get the most from your F5 investment. Whether it's providing fast answers to questions, training internal teams, or handling entire implementations from design to deployment, F5 Global Services can help ensure your applications are always secure, fast, and reliable. For more information about F5 Global Services, contact [consulting.sales@f5.com](mailto:consulting.sales@f5.com) or visit [f5.com/support](https://f5.com/support).

## DEVCENTRAL

The [F5 DevCentral](#)™ user community of more than 300,000 members is your source for the best technical documentation, discussion forums, blogs, media, and more related to app services.

