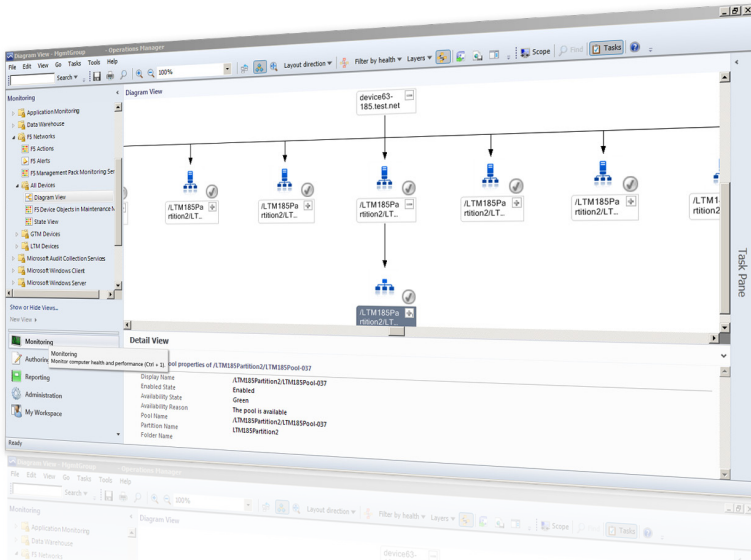


F5 PRO-enabled Monitoring Pack for System Center

PRODUCT OVERVIEW



“System Center 2012 enables the private cloud, and the F5 Monitoring Pack for System Center gives customers the added strengths of the F5 BIG-IP solution.”

Mike Schutz, General Manager, Product Marketing, Windows Server and Management

Get the Most from F5 and Microsoft System Center

Key benefits

- Monitor current performance and health metrics of BIG-IP devices
- Get PRO-enabled resource provisioning
- Improve application performance and deliver a better user experience
- Save administrative time and operating costs
- Plan infrastructure growth based on precise metrics, powerful reporting capabilities, and historical data analysis

Microsoft System Center gives you the flexibility and control of virtualization in delivering your applications. But to gain the maximum level of efficiency from your virtualized environment, you need a complete view of your Application Delivery Networking infrastructure and its impact on your applications.

F5 PRO-enabled Monitoring Pack is a software plug-in module for the Operations Manager component of Microsoft Systems Center that gives you a comprehensive view of BIG-IP® Local Traffic Manager™ device health data as well as virtual server, pool, and pool member data. You can use this critical information for trending and analysis of your application delivery architecture in order to optimize resource utilization and effectively manage your infrastructure growth.

Get current performance and health metrics

By providing near real-time performance monitoring of BIG-IP Local Traffic Manager (LTM) traffic as well as device health metrics, F5 Monitoring Pack gives you valuable information you can use to provision resources as efficiently as possible. Choose from more than 180+ metrics about your BIG-IP LTM devices.

Improve application performance and user experience

You can correlate data about your BIG-IP LTM devices with application traffic data to gain insight into the performance of your applications. By leveraging the powerful reporting capabilities of the System Center Operations Manager component to create customized, detailed reports, you can quickly see metrics on your instrumented

traffic as well as the health of your objects and devices. This data helps you make critical infrastructure decisions to improve performance and deliver a better user experience.

Reduce costs

F5 Monitoring Pack provides an advanced health model that greatly reduces the number of objects to monitor and the administrative time and resources required. The node enable and disable feature makes it possible for administrators to outsource time-consuming tasks to be handled in a more cost-effective manner.

Plan for future growth

As traffic changes and increases, the current and historical data you get from F5 Monitoring Pack helps you trend and analyze traffic patterns. This gives you the

vital information you need to plan your infrastructure and identify future capacity needs.

PRO-enabled functionality

Using PRO technology, you can set thresholds to alert you when the number of connections on a virtual machine reaches the desired maximum level. A PRO tip offers corrective action when the threshold is reached. Using the F5 iControl® API, you can make calls into the Virtual Machine Manager component of System Center and into BIG-IP LTM via PowerShell. For example, you can instruct System Center to introduce another instance of a virtualized server and direct BIG-IP LTM to add another pool member. When utilization drops, an alert can trigger another PRO tip to remove the pool member and the virtual machine instance.

F5 Monitoring Pack features

- Fully integrated with Microsoft System Center 2012
- F5 BIG-IP v11 support
- PRO-enabled functionality
- Near real-time performance monitoring
- 180+ health metrics
- Customized network map views
- Flexible reporting engine
- Customizable thresholds and alerts
- Node enable and disable
- Historical data collection

Learn more about F5 Monitoring Pack

To learn more about F5 Monitoring Pack and Microsoft System Center, use the search function on F5.com to find these resources.

Article

[Microsoft Virtualization Meets F5](#)

Videos

[F5 and Microsoft Virtualization Technology F5 Monitoring Pack demo](#)

F5 Networks, Inc. 401 Elliott Avenue West, Seattle, WA 98119 888-882-4447 www.f5.com

F5 Networks, Inc.
Corporate Headquarters
info@f5.com

F5 Networks
Asia-Pacific
apacinfo@f5.com

F5 Networks Ltd.
Europe/Middle-East/Africa
emeainfo@f5.com

F5 Networks
Japan K.K.
f5j-info@f5.com



IT agility. Your way.®