

## Accelerate Data Center Disaster Recovery with F5 and VMware SRM

### F5 and VMware offerings

- F5 BIG-IP® Local Traffic Manager™
- F5 BIG-IP® Global Traffic Manager™
- VMware vSphere
- VMware vCenter Server
- VMware vCenter Site Recovery Manager

In virtualized server environments, VMware vCenter Site Recovery Manager (SRM) dramatically improves and simplifies disaster avoidance and recovery. However, rerouting traffic from one data center to another and re-initiating the virtualized environment requires additional solution elements.

F5® BIG-IP Application Delivery Controllers solve several of the most common issues, such as IP address management, automated traffic request rerouting, and accelerated data transfer. With the F5 and VMware solution, your business can minimize application downtime, reduce delays and mistakes caused by manual tasks, and ensure business continuity.

### Local Execution, Global Availability, and Seamless Integration

BIG-IP devices are installed at both the primary and secondary sites. Local traffic requests are processed by BIG-IP Local Traffic Manager (LTM) and global traffic requests are processed by BIG-IP Global Traffic Manager (GTM).

In this configuration, the BIG-IP devices provide full proxy capabilities, offering a layer of isolation between the network and your virtualized environment. This separation and the advanced application delivery functionality of BIG-IP devices minimize downtime and provide automation for speed and accuracy.

### Minimize Downtime

The BIG-IP system route domain feature preserves IP addresses between data centers, providing the ability to recover virtual machines (VMs) at the secondary site without

## Learn more

For more information about F5 and VMware SRM, visit the [VMware vSphere solutions page](#). You can also use the search function on [f5.com](#) to find the following resource.

### Deployment guide

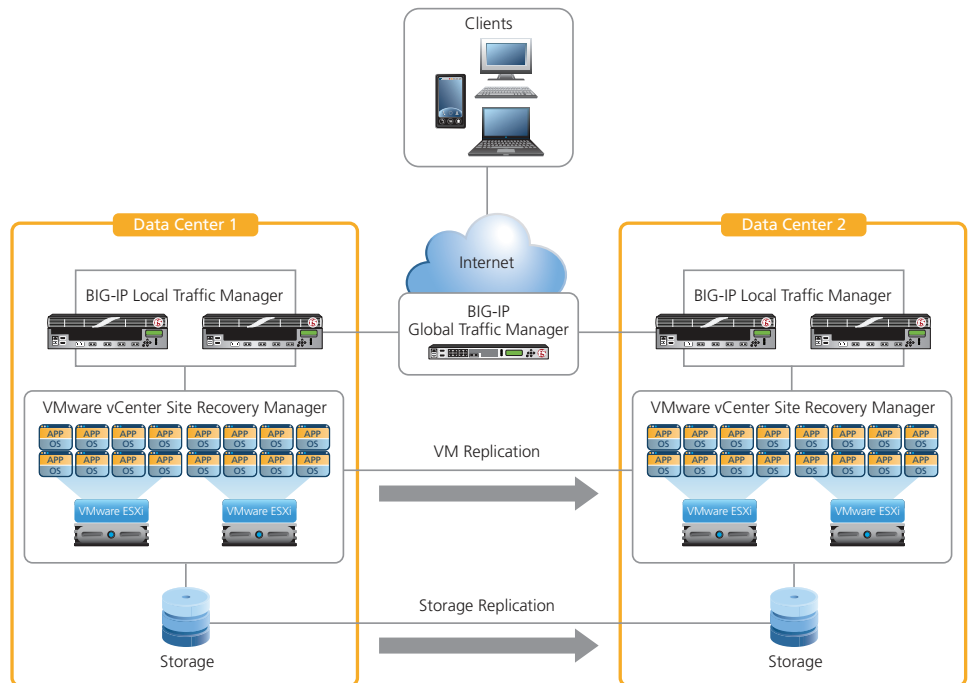
Deploying the BIG-IP System with [VMware vCenter Site Recovery Manager](#)

needing to re-issue them new IP addresses. This can save several minutes for each VM, and ultimately shave hours off the recovery time.

In addition, the BIG-IP devices accelerate the traffic between the data centers by using compression, deduplication, and TCP optimization, enabling quicker migration times, so the secondary site can open for business sooner.

## Automate Manual Tasks for Speed and Accuracy

The BIG-IP devices also automatically reroute incoming traffic to the protected data center, once application VMs are restarted there. No manual intervention is required due to automatic switching of site availability from the primary site to the secondary site, saving time and labor.



Architectural overview of the VMware SRM and F5 solution in a multi-site data center environment.

To find out how F5 and VMware joint solutions can help your business, contact [VMwarePartnership@f5.com](mailto:VMwarePartnership@f5.com) or visit the [VMware solutions page](#).

F5 Networks, Inc. 401 Elliott Avenue West, Seattle, WA 98119 888-882-4447 [www.f5.com](http://www.f5.com)

F5 Networks, Inc.  
Corporate Headquarters  
[info@f5.com](mailto:info@f5.com)

F5 Networks  
Asia-Pacific  
[apacinfo@f5.com](mailto:apacinfo@f5.com)

F5 Networks Ltd.  
Europe/Middle-East/Africa  
[emeainfo@f5.com](mailto:emeainfo@f5.com)

F5 Networks  
Japan K.K.  
[f5j-info@f5.com](mailto:f5j-info@f5.com)

